



# Shaftesbury Youth Council

Shaftesbury School

Town Clerk: Mrs Brie Logan  
e-mail: [office@shaftesbury-tc.gov.uk](mailto:office@shaftesbury-tc.gov.uk)

To: All interested pupils at Shaftesbury School

For Information: All other recipients

## A G E N D A

### **SHAFTESBURY YOUTH COUNCIL**

You are invited to a meeting of the Youth Council for the transaction of the business shown on the agenda below. To be held at **1.30 pm on Wednesday 18<sup>th</sup> January 2023** at the **Shaftesbury School**.

Mrs Brie Logan

Town Clerk, 12<sup>th</sup> January 2023

1. [To elect a Chair and Deputy Chair of the Youth Council](#)
2. [Project priorities review and action!](#)
3. [To consider a schedule of the meetings for the remainder of this academic year](#)

## **To elect a Chair and Deputy Chair of the Youth Council**

### **Summary**

An effective Council has a chairman who can keep discussion moving and capture the essence of the points being made. They should also be able to identify where people may have a contribution to make but are not speaking up. This helps to have the best collection of views before coming to a decision.

The Chairman will have the opportunity to use a second or 'casting' vote on any matter where the vote is equally split. The Clerk will advise and guide whenever this arises.

The Clerk will invite nominations for the role of Chair of the Youth Council.

Voting will be by written ballot. Each student will write the name of person they wish to see as chair. The Clerk will explain the process if more than 2 people are nominated.

Once the Chair is elected, the new Chair will call for nominations for Vice Chair.

The same process will then take place for the position of Vice Chair.

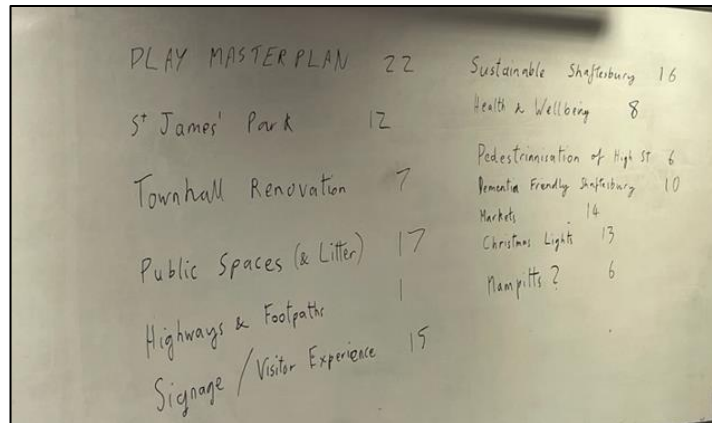
The Youth Council may also decide whether to use the terms 'Chair' 'Chairman' (for either gender), 'Chairman/woman' or 'Chairperson'. For some people this is a very important decision, so it is important to seek the views of all students.

### **Recommendation**

That the Youth Council selects its Chair and Vice Chair for the rest of the academic year 2022 – 2023.

## Project priorities review and action!

In November 2022 the Youth Council selected the projects that may want to get involved in based on the Shaftesbury Town Council strategic plan. The projects with the highest number of votes will be the priority for the Youth Council and are:



PLAY MASTER PLAN	22	Sustainable Shaftesbury	16
St James' Park	12	Health & Wellbeing	8
Townhall Renovation	7	Pedestrianisation of High St	6
Public Spaces (& Litter)	17	ementia Friendly Shaftesbury	10
Highways & Footpaths	1	Markets	14
Signage / Visitor Experience	15	Christmas Lights	13
		Nampitts?	6

1. Play Masterplan (22)
2. Public Spaces including litter (17)
3. Sustainable Shaftesbury (16)
4. Signage/ Visitor Experience (15)

The key areas of focus for the Youth Council for January to end of March will need to be (1) Play Masterplan and (3) Sustainable Shaftesbury.

The Youth Council will be asked to look at (2) Public Spaces and (4) signage later this year.

### 1. Play Masterplan

- a) The St James project started on 3<sup>rd</sup> January and is a 10-week programme. We are aiming for the launch to coincide with the Kings Coronation on the weekend of 6<sup>th</sup> May. What ideas do you have for the opening event?
- b) Shaftesbury Town Council has resolved to (1) develop the Wincombe Recreation Ground Masterplan (2) improve the play experience at Gower Road and Ash Close.

The concept plans for each of the parks is shown in the appendices. Please provide feedback on what works and what could be better. What ideas do you have for each of the parks? Do the recommendations for each of the parks work for you?

# Appx A Ash Close CONCEPT plan

OVERVIEW	
Ward	East
Size	Approximately 35 x 50m within an area of around 0.2ha (whole field)
Description	Medium sized rectangular grassy space with 'younger' equipment ranged along south side and 'older' equipment to the north.
Condition / ambience	Good
Equipment lifespan	Younger play includes items needing immediate replacement
Play value	Adequate but limited
Who is it for?	Biased towards under 5s
Inclusive design	Poor: lacks wheelchair accessible surfacing, entrances cramped and awkward, very little seating. Equipment not inclusive.

## Description

Ash Close Play Area is an open grassy space located at the northern end of East Ward. Surrounded to the north, east and west by housing and to the south by school playing fields, the site is essentially 'landlocked,' with access to the site only via narrow footpaths or car parking areas threaded through the estate, difficult for any first-time visitor to find. Some new tree planting has been carried out along the southern edge. Known locally as 'Spider Park'. No evidence of litter or antisocial behaviour.

## Summary of equipment

- Younger: Springer; toddler multi-play unit; talk-tubes (all on bonded rubber mulch); climbing frame, double flat set swings, double cradle seat swings, with swing barriers (all on wet-pour)
- Older: Freestanding slide on grass matrix tiles, Space Net on wet-pour surface
- Other: five aside goal

## Appraisal

### Strengths

- Nice atmosphere, tranquil, well overlooked by neighbours, a peaceful space
- Excellent scope for unaccompanied 'doorstep play' by younger children
- Space for ball play (there is a five aside goal)
- Bonded mulch surface with no edge has worked well here

### Weaknesses

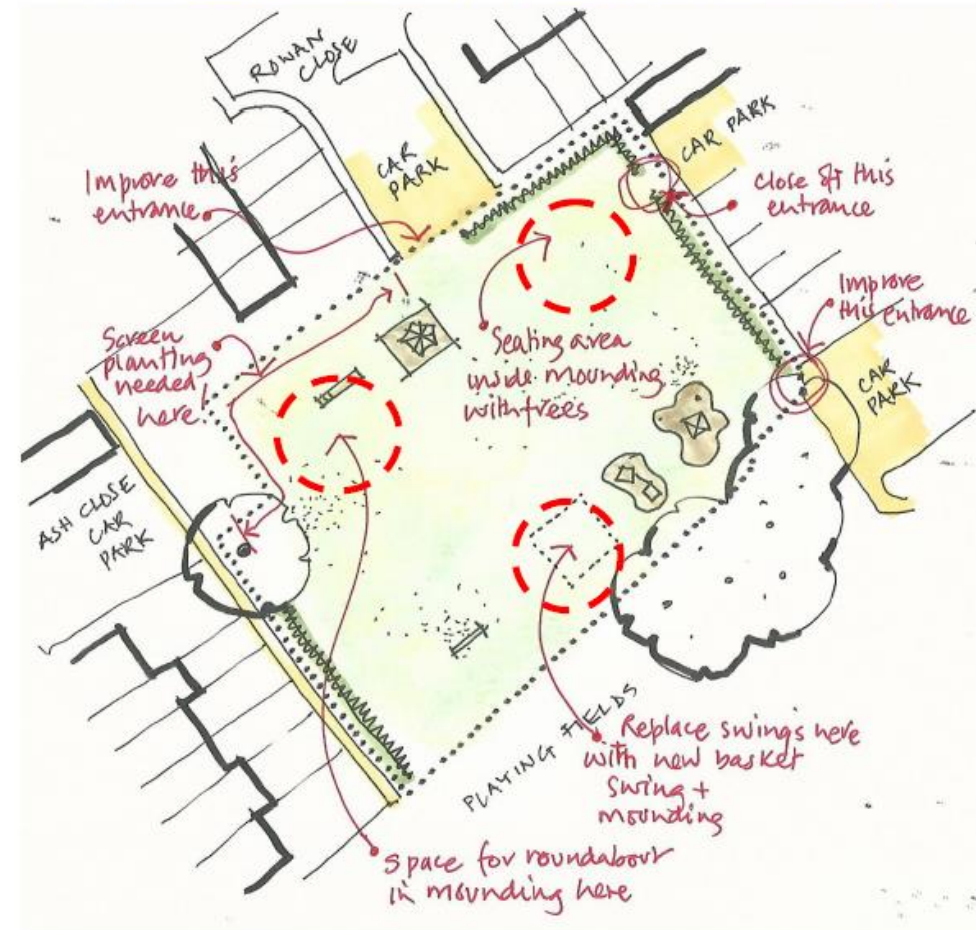
- Entrance 1 via car park (south-east corner) blighted by abandoned vehicles and broken glass, ground levels very uneven
- Entrance 2 (north-east corner) very unsightly and barely useable
- Wet-pour shrinkage

## Recommendations

- Replace both swing-sets with a new basket swing and include mounding / trees, remove swing barriers (other pieces to be replaced at end of life)
- Add large roundabout to Space Net and Slide area, and include mounding / trees
- Add picnic bench and seating to north-east corner with trees / extra hedge planting
- Remove entrance 2 (not fit for purpose)
- Remove abandoned vehicles x 2 on way to entrance 1
- All gates to have self-closers fitted and replace dog bin with litter bin
- Consider phased replacement of wet pour surface with grass matrix tiles
- Add a Spider, as an item of equipment or as part of some bespoke seating perhaps



3



## Ash Close Play Area



OVERVIEW	
Ward	East
Size	Approximately 8m x 10m
Description	Extremely small, fenced play area, placed centrally within a long, narrow grassy roadside space, next to housing.
Condition / ambience	Poor condition. The grass space is pleasant, but the play area fence and surfacing create a strong sense of separation from the setting.
Equipment lifespan	Two of the three pieces need replacing now and the third has exposed footings so needs to be lifted out and re-set at correct level.
Play value	Very poor indeed, even given the small size of the site
Who is it for?	Under 5s.
Inclusive design	Very poor access, little seating, equipment not inclusive.



**Description**

Gower Road play area is located in East Ward, within a large housing estate close to the eastern boundary of Shaftesbury, where town meets countryside. It is a quiet part of town, with few pedestrian movements and low levels of traffic. The play area is a standard developer-led 'LAP,' or Local Area for Play. The wider setting for the play area is a long narrow grassy space with established wooded boundary to the sides and rear but the play area has been kept very separate from this, with bow top fencing and surfacing cutting it off from the wider setting. This creates something of a 'goldfish bowl' experience for users.

**Summary of equipment**

Equipment consists of a small multi-play unit in the form of an elephant, in very poor condition and poorly designed; a 'rocker', with exposed fixings, and a see-saw, with missing caps.

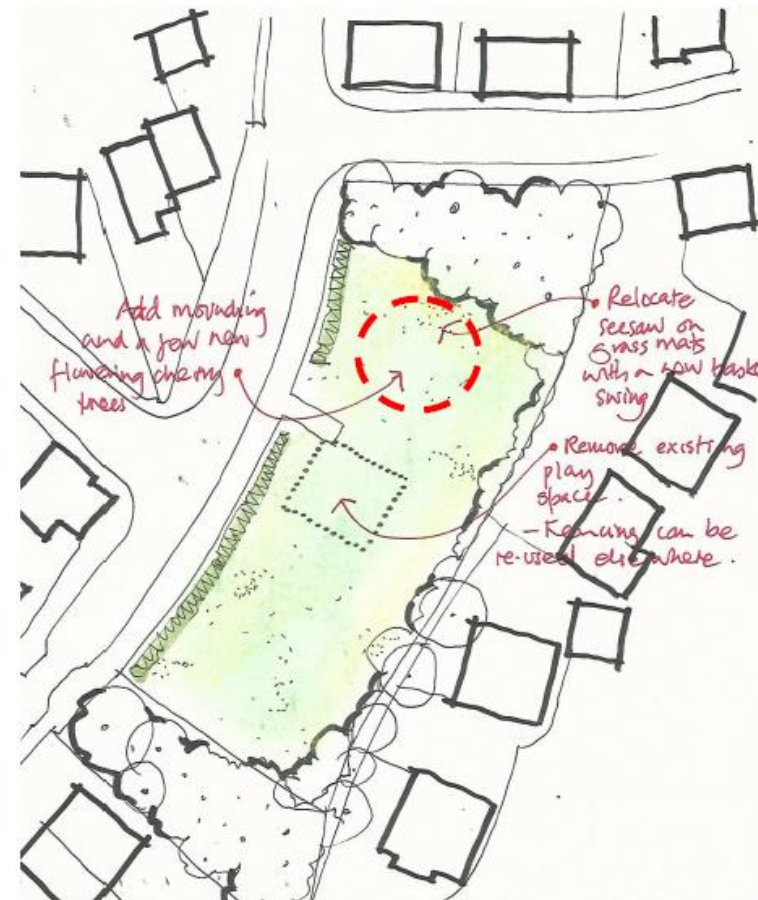
**Appraisal**

**Strengths**

- Quiet peaceful location and generously scaled grassy setting with mature trees
- There is a seat, possibly the best bit of the play area

**Weaknesses**

- An extremely poor play offer with very little play value and not a place anyone would want to spend time in
- Elephant multi play unit is in very poor condition, at the end of its useful life
- Fencing creates a feeling of separation between play area and surrounding grass, potentially deterring children from playing on the grass
- The installation is very poor, with a needless step up into the play area (reducing opportunities for disabled access) and loose fill surfacing that is well above adjacent ground levels.
- The timber retaining edge is cheap and poor-quality material, not fit for purpose



**Recommendations**

- Relocate the play space with the rocker and seesaw within the grass, nearer the south-facing (sunnier) end of the site., No fencing needed and use grass matrix tiles as IAS (recycle the bark chip on another play site)
- Replace the elephant multi play unit with a basket swing, and install on the grass over rubber matrix
- Add some simple low mounding around the relocated equipment
- Supply and install a few new benches

**Gower Road Play Area**



## Appx C Wincombe Recreation ground

OVERVIEW	
Ward	East
Size	Play zone: approximately 0.5ha (excluding wider playing fields area)
Description	A play area which has had a high level of investment in the past to create junior and teen areas plus a large asphalt ball play with goal end, plus new outdoor gym.
Condition / ambience	Poor condition, with too much equipment, mostly in a poor state of repair
Equipment lifespan	The majority of the equipment now needs to be replaced
Play value	Generally adequate though some individual pieces promise more than they deliver
Who is it for?	From 5 upwards; heavy wear and tear from high levels of use
Inclusive design	Very poor access, little seating, equipment not inclusive.

### Description

Wincombe Lane is seen by many as Shaftesbury's 'flagship' play area and it boasts an extensive array of equipment, alongside a large ball play area and outdoor gym, all set within an attractive piece of park carved out of the countryside with which it connects. The play zone sits within a wide corridor accessed off Wincombe Lane, between two parallel rows of housing, which ensures that the play area is nicely overlooked, although this has unfortunately not deterred much of the anti-social behaviour which seems to have occurred on site. Sadly the equipment has also not stood up to the high levels of usage here. In addition to 'wear and tear' there also remain some issues dating back to the original installation, with poor junctions between different surfacing types, and poor-quality materials retaining loose fill. It is definitely a site which demands a fresh approach to design and specification.

### Summary of equipment

Four separate equipped areas, three of which are fenced, two of which are catering for Junior play and two teen play. One area is surfaced in grass with rubber matrix tiles; one in wet-pour, and two in loose fill bark chip with a thin timber retaining edge. Other items include a double cable-run on wet pour, a large asphalt area with goal-end, and further south, an outdoor gym.

### Appraisal

#### Strengths

- An attractive site, pleasantly overlooked
- A commendable attempt to provide a wide range of play opportunities for an extensive age range

#### Weaknesses

- Shrinkage of wet pour is widespread across the site including to previous recent repaired areas and repairs are a continual drain on STC resources
- Large amount of equipment in such poor condition that it is not repairable, resulting from over-reliance on laminated ply boarding which has not proved robust enough for this location

### Recommendations

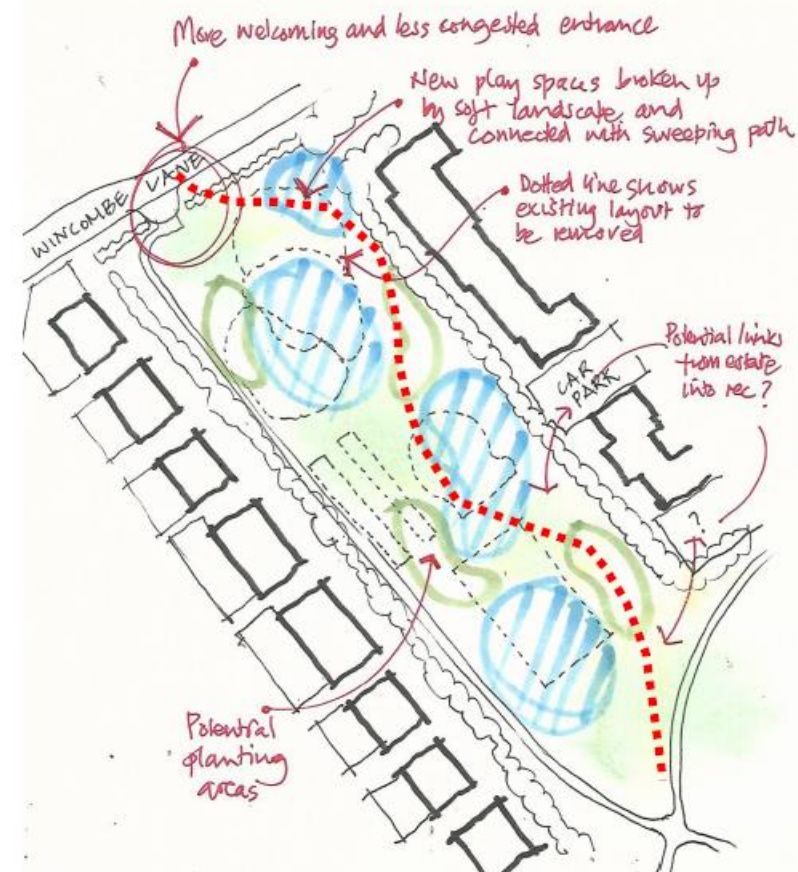
- Masterplan required for new layout for play zone – some equipment may be suitable for re-use on sites with much lower levels of usage, where the ply boarding would have a longer lifespan than it does at Wincombe.

#### Meanwhile.....

- Turn goal end to the ball play round 180 degrees, so that it faces the asphalt, and remove the hoop for re-use elsewhere, restore eroded area to south of the ball play back to grass. Add second goal end to complete the court



8



## Wincombe Recreation Ground

## Project priorities review and action - continued!

### Sustainable Shaftesbury

A Sustainable Shaftesbury Town Council Working Group has recently been formed and it is in the process of developing a robust plan for the town.



The Climate Action Group is an informal advisory group, developing, influencing and implementing projects that help to reduce Shaftesbury's carbon footprint and to restore biodiversity.

The Climate Action Group will meet to progress the Sustainable Shaftesbury Plan and establish how to bridge gaps between different eco-community groups and organisations. The group meets monthly to consolidate progress and develop new plans.

Members use the group as a means to help people to keep healthy, active and green, and provide a space where sectors can learn from and be inspired by one another about sustainable practice.

The themes within the **Sustainable Shaftesbury Vision** are:

1. Engaging and Enabling our community
2. Transforming our Nature – include Gardens/Hedges/Soil under this heading
3. Supporting Sustainable Food
4. Reducing Consumption and Waste – include water under this heading
5. Reducing Energy Demand and Producing Smarter Energy
6. Changing the way we move around
7. Supporting our local businesses

These will be under here main headings:

1. Carbon – developing a local low carbon future
2. Biodiversity
3. Health and Wellbeing

In time these headings will increase to include (potentially)

4. Resilience and adaptation
5. Equity and social cohesion
6. Economy

The Plan will include:

1. This is what the council is doing
2. This is what businesses are doing
3. This is what you can do

More information about the [Sustainable Shaftesbury summary of Working Group meetings](#) can be viewed via this link including the [Carbon Footprint Impact Report for Shaftesbury](#).

**Recommendation:** Nominate four representatives from the Youth Council to join the Sustainable Shaftesbury Working Group (dates of meetings in agenda point 3) so that the youth are actively represented within the key stakeholder group.

# Shaftesbury Sustainability Stakeholders



Communication + Education How we engage and enable our community
Green Spaces How we transform our green spaces
Sustainable Food How we support local food production, distribution and consumption
Integrated Transport How we change the way we move around
Smarter Energy How we reduce energy demand and produce our own clean energy
Consumption + Waste How we reduce consumption and waste
Sustainable Business How we support our local businesses to be more sustainable
Health + Wellness How we build a stronger, healthier, more resilient community



How we transform our green spaces



How we move around



Communication & Education



Health & Wellbeing



**To review the schedule of meetings for the remainder of this academic year**

For information only

To understand what works well for the school in terms of diary management the following dates have been rest for the rest of the academic year:

**Youth Council**

Monday 20 <sup>th</sup> March	1:30pm
Thursday 11 <sup>th</sup> May	1:30pm
Wednesday 5 <sup>th</sup> July	1:30pm

**Sustainable Shaftesbury – Working Group** (four representatives from Youth Council)

Tuesday 14 February	6pm
Tuesday 14 <sup>th</sup> March	6pm
Tuesday 11 <sup>th</sup> April	6pm
Tuesday 9 <sup>th</sup> May	6pm
Tuesday 20 <sup>th</sup> June	6pm